

## Nissan Patrol DX 2006

### Removing and cleaning the fuel tank.

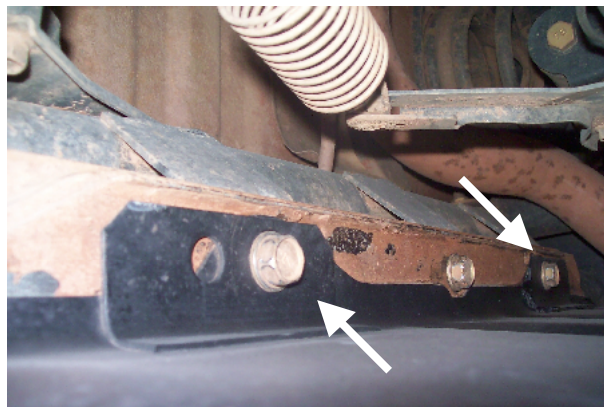
*(I did it to thoroughly clean out all petrol (as I have a diesel) and to check it out)*

1. Unscrew (unbolt) the cover under the wheel arch.



2. Unbolt the bash plate (only undo the outside ones) If you have a tow bar you'll have to remove that first...

*DO NOT undo the middle one UNTIL your ready to lower the tank (Step 5)*



3. Disconnect fuel lines - need pliers and a strong grip..

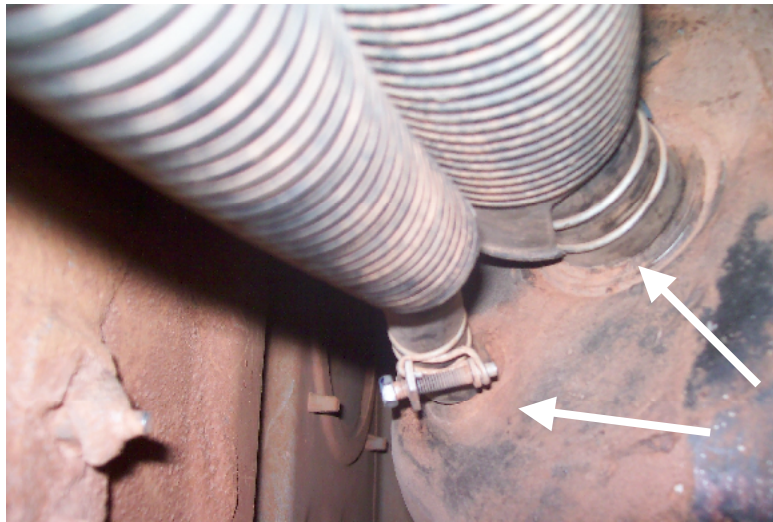
*2<sup>nd</sup> photo – shows the lines and tank disconnected*

*3<sup>rd</sup> photo – shows fuel lines after tank taken out*



4. Disconnect the main inlet pipe and air line from off the tank (*use screw driver or spanner*)

*I used spanner so it didn't slip*



5. Unscrew the middle bolts holding up the fuel tank and slowly lower it down.  
The reason I say **SLOWLY**: there are the wires still connected on top off the tank.

*TIP - You could use the bash plate as a stand to lower the tank onto (see below)*



6. Disconnect the wires... *be careful as these connectors are a pain to deal with... also a bit hard to disconnect off the tab on the tank*





7. What you now have is a fuel tank, bash plate, filler and air pipe....to clean and inspect...



Before you do anything else, I would suggest to give the tank a good scrub, as some of the mud is caked on from years of bush bashing etc!?!

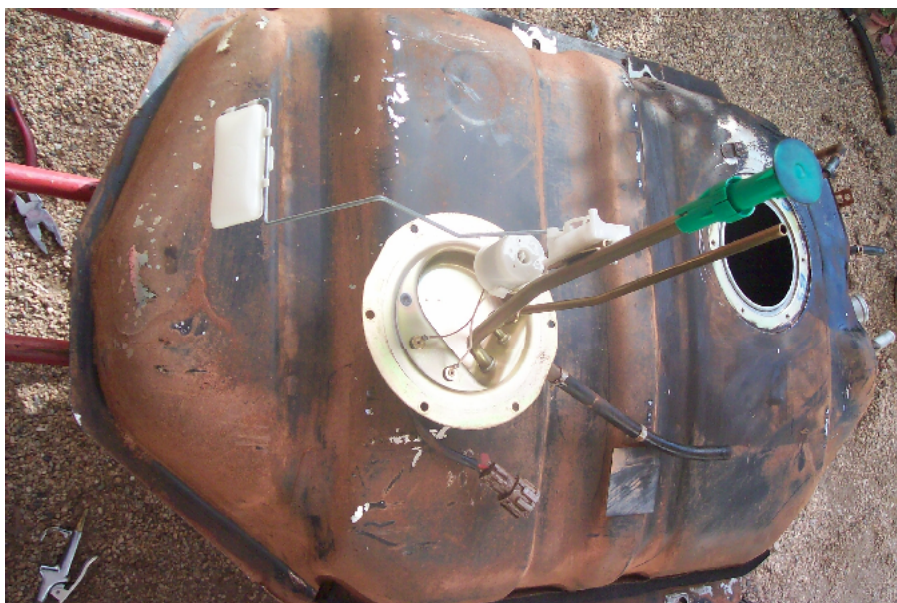
Also inspect the bash plate as it may have cracks in it that may need welding.

*Mine had 3 cracks just above where the brackets were spot welded - the longest about 10cms.*

*I welded them along the cracks on both sides and repainted it*



8. Once the tank has been scrubbed – unscrew the float unit (6 screws) and pull out it out carefully.



9. You can now drain and remove any slug etc from the tank...

*Views of inside the tank...*

*Filler pipe and air line*

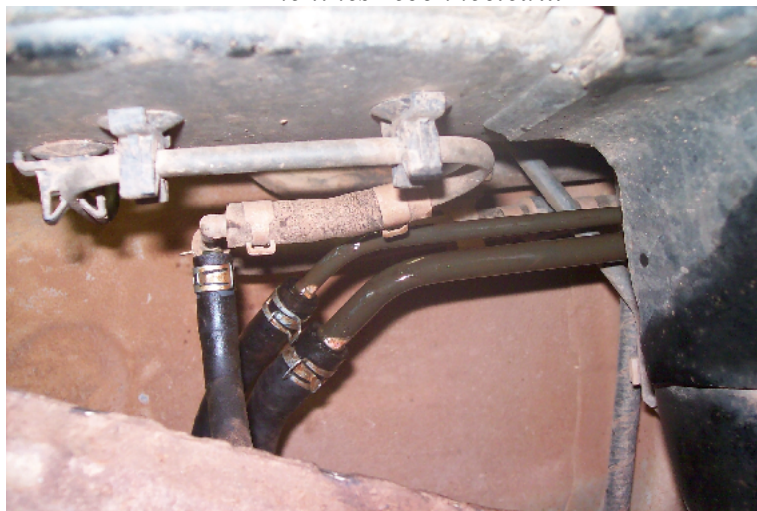


Where the fuel intake sits in – there's a 1cm ridge, which probably /obviously/maybe stops slug etc from messing up the fuel line intake



10. The process is then reversed to reconnect everything and re-install the fuel tank

*The lines reconnected...*



Hope this helps some one out...out there...  
Cheerio... CUROUND....